

the cherubic hymn of the sofroniev hermitage

*A low 'A' may be held
throughout the hymn.*

First Tone

C *D*
A - ne -

Un. *D* *A*↓
a -

C *D*
na - nes.

D *C* *D* *C*
I zhe Khe - ru - vi -

D *C* *D* *C* *D*
my Khe - ru - vi - my tai -

no tai - no o - bra - zu - iu - shche

C *D* *C* *D*
o - bra - zu - iu - shche tai no o - bra -

C *D* *C* *D*
zu - iu - shche

C *D* *C* *D*
o - bra - zu - iu - shche I zhi - vo - tvo - ria -

C *D* *C* *D*
shchei

C *D*
Tro - i - tse tri - svia - tu - iu piesn pri -

C *D*
pie - va - iu - shche pri - pie - va - iu - shche tri - svia - tu - iu

C *D* *C*
piesn pri - pie - va -

D *C* *D* *C* *D*
iu - shche pri - pie - va - iu - shche, Vsia -

C *D*
ko - ie vsia - ko - ie ny -

C *D* *C* *D* *C*
nie zhi - tei - sko -

D
ie ot - lo - zhim po - pie - che - ni - e

C *D* *C* *D*
e po - pie - che - ni - e ot lo - zhim po - pie -

che
 ni - e po - pie - che - ni - e.

Chanted quickly.

A - min. Ia ko da Tsa - ria
 vsiekh Tsa - ria vsiekh po - dy - mem po - dy -
 mem An - gel' - ski - mi ne - vi - di -
 mo ne - vi - di - mo do ri - no - si - ma
 chin
 mi no - si - ma - chin - mi. A - li - lu - i - a. A -
 li - lu - i - a. A - li - lu - i - a.

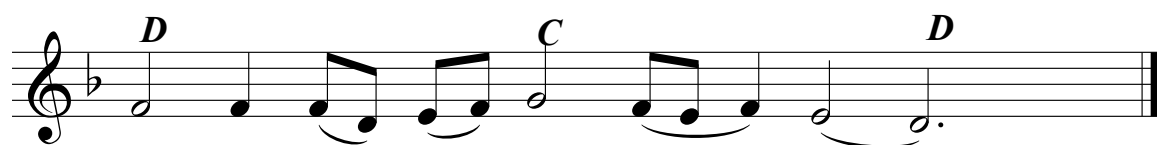
anaphora-znamenny chant



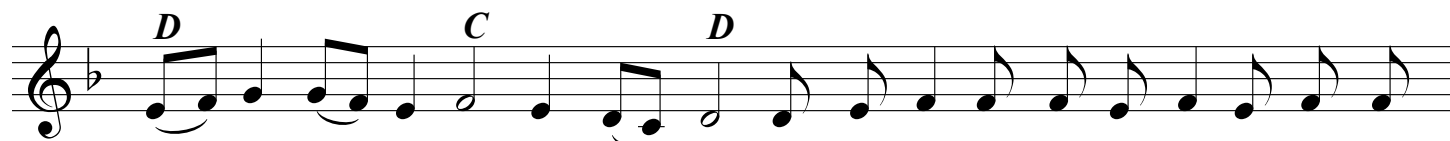
Mi - lost' mi - ra zhert - vu khva - le - ni - a.



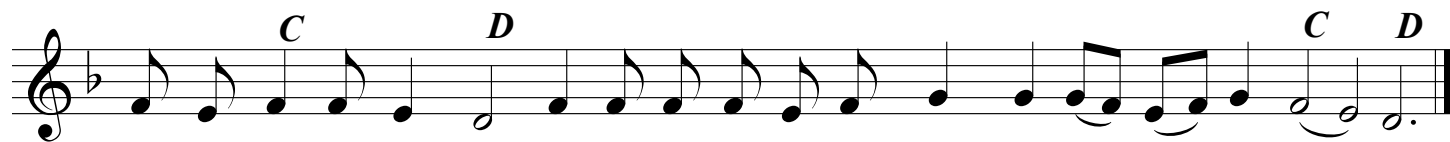
I so du - khom tvo - im.



I - ma - my ko Go - spo - du.



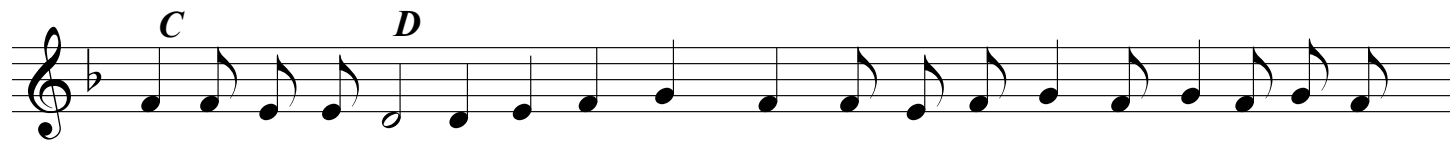
Do - stoi - no i pra - ved - no yest' po - klan - ya - ti - sya Ot - su i Sy - nu



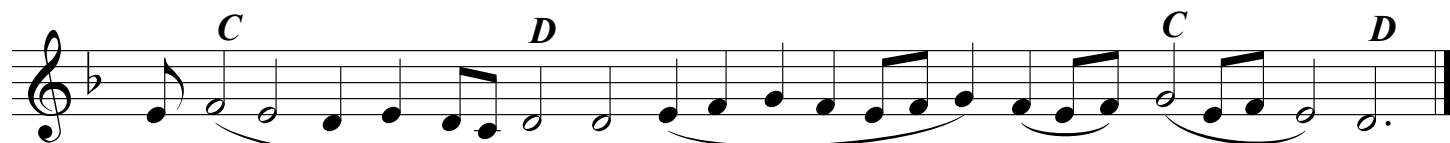
i Svya - to - mu Du - khu, Tro - i - tse ye - di - no - sushch nei i ne - raz - del' - nei.



Sviat, Sviat, Sviat Go - spod' Sa - va - of, is - poln' ne - bo i zem - lya



sla - vy tvo - ye - ya. O - san - na vysh - nikh. Bla - go - slo - ven gri - dy vo im - ya



Go - spod - ne. O - san - na vysh - nikh.

D *D* *C* *D*
A - min'. A - min'.

D
Te-be po-yem, te-be bla-go-slo-vim, te-be bla-go-da-rim Go -

C *D*
spo-di i mo-lim-ti-sya Bo-zhe nash mo-lim-ti-sya Bo-zhe

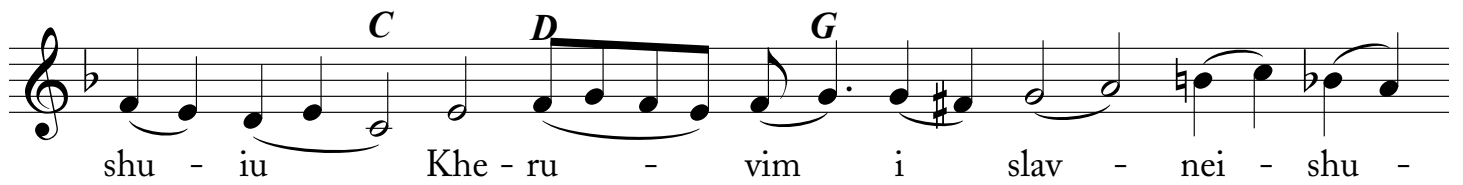
C *D*
nash mo-lim-ti-sya Bo - zhe nash.

D *C* *D* *G*
Do-stoi-no yest' ya-ko vo i-sti - nu bla-zhi -

D *C* *D*
ti tia Bo-go-ro-di-tsu, pri-sno-bla -

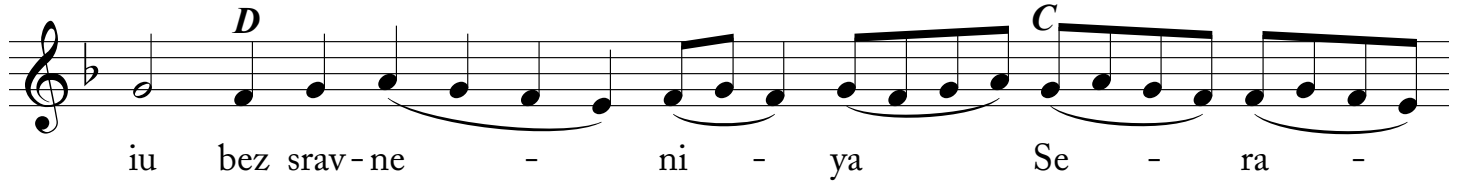
Un. *G* *D*
zhen - nu - iu i pre-ne-po-roch - nu - iu i Ma -

C *D*
ter' - Bo - ga na - she - go. Chest - nei -



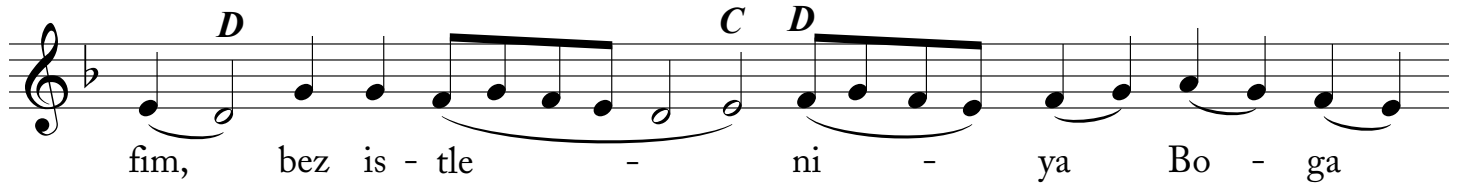
shu - iu Khe - ru - vim i slav - nei - shu -

Chords: C, D, G



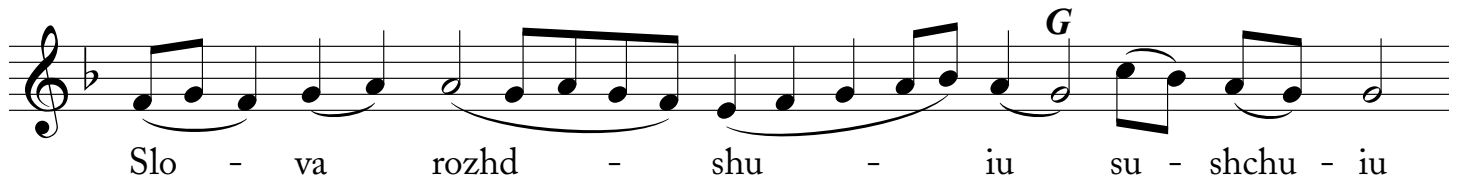
iu bez srav - ne - ni - ya Se - ra -

Chords: D, C



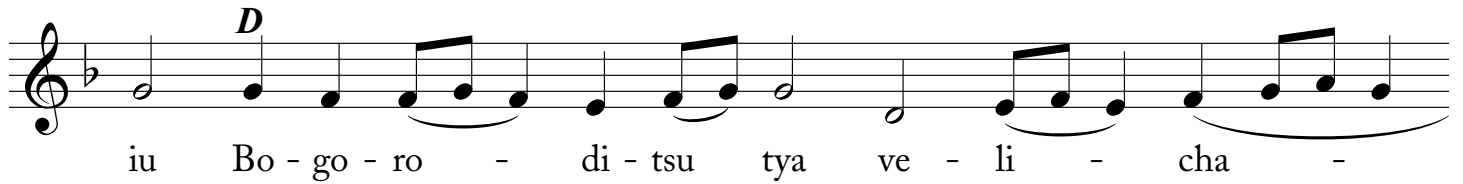
fim, bez is - tle - ni - ya Bo - ga

Chords: D, C, D



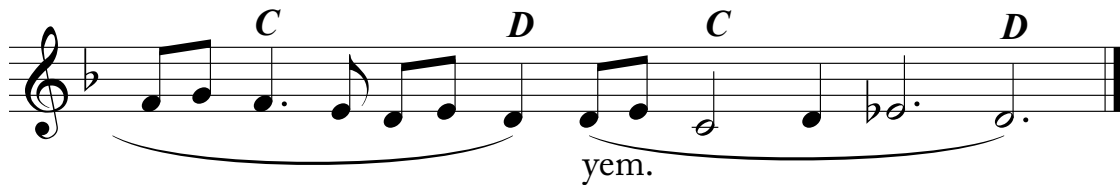
Slo - va rozhd - shu - iu su - shchu - iu

Chord: G



iu Bo - go - ro - di - tsu tya ve - li - cha -

Chord: D



yem.

Chords: C, D, C, D